



*Where cherished moments come to life, families gather & the echoes of laughter and friendship are around every corner*

## **1000 LONGACRE PLACE**

Vernon, BC



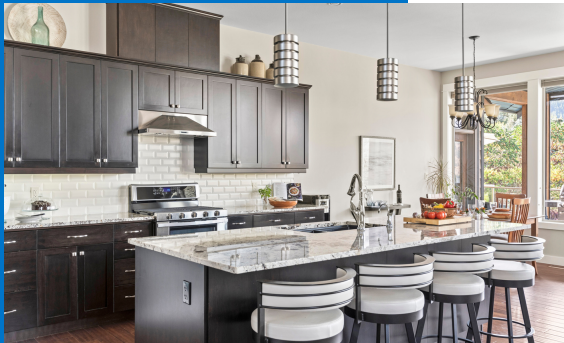
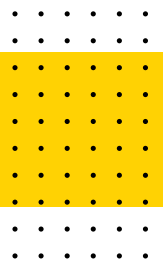
Nestled in a peaceful cul-de-sac, this 5 bedroom, 5 bath executive family home offers not only a serene Okanagan retreat but also easy access to lakes, hiking trails, skiing adventures, and beautiful beaches. A mere 45-minute drive to YLW ensures that life here is both convenient and accessible.

## WHAT MAKES THIS PLACE SPECIAL

- See stunning panoramic Okanagan Lake & sunset vistas & gauge ski season conditions with valley & mountain views
- Observe Wednesday sailboat races, weekend sky jumps & July 1st fireworks
- Enjoy expansive deck w/ multiple seating/dining areas, motorized privacy sun screen & gas BBQ
- Experience the seclusion of fully landscaped backyard w/ gorgeous heated saltwater pool, water feature & sunshade
- Love the backyard Oasis including sprawling pool deck & patio, outdoor stand up bar, hot tub, private change room/water closet & quick access to indoor games room & library with custom shelving & storage
- Appreciate exquisite hickory hardwood flooring, floor to ceiling windows, custom blinds, modern fireplace & decor, 10-15 ft ceiling heights, Italian tile, and heated floors in main level baths & laundry room
- Create and entertain in the Chef's kitchen w/ granite counters, subway tile backsplash, stainless appliances & hood vent & spacious breakfast bar island
- Indulge in primary bedroom w/ deck access, spa-like ensuite, custom walk-in closet & TV
- Relax in media room plumbed for wet bar & wired for surround sound
- Work in the custom office/den with contemporary décor, storage & pocket door for privacy
- Listen to built-in sound system throughout
- Supplement with mortgage helper – self contained, separate entrance 1 BEDROOM LEGAL SUITE featuring modern décor & lighting, heated floor bath, separate laundry & all the appliances
- Park more than one vehicle in oversized garage, w/ room for toys, exterior parking for tenant & RV
- \*Some furnishings included. Need we say more?!

# PROPERTY OVERVIEW

MLS: 10284670



If the walls of this home could speak, they would reveal countless gatherings, shared meals, and the delight of creating culinary masterpieces together in the well-designed kitchen. Harvest your veggies straight from the garden beds for a farm to table experience right at home!

---



Whether it's enjoying summer sunsets on the upper deck, soaking in the hot tub after a day on the slopes, or relaxing on the sun-kissed pool deck, this home offers breathtaking views of Okanagan Lake and Silver Star Mountain year-round.

---



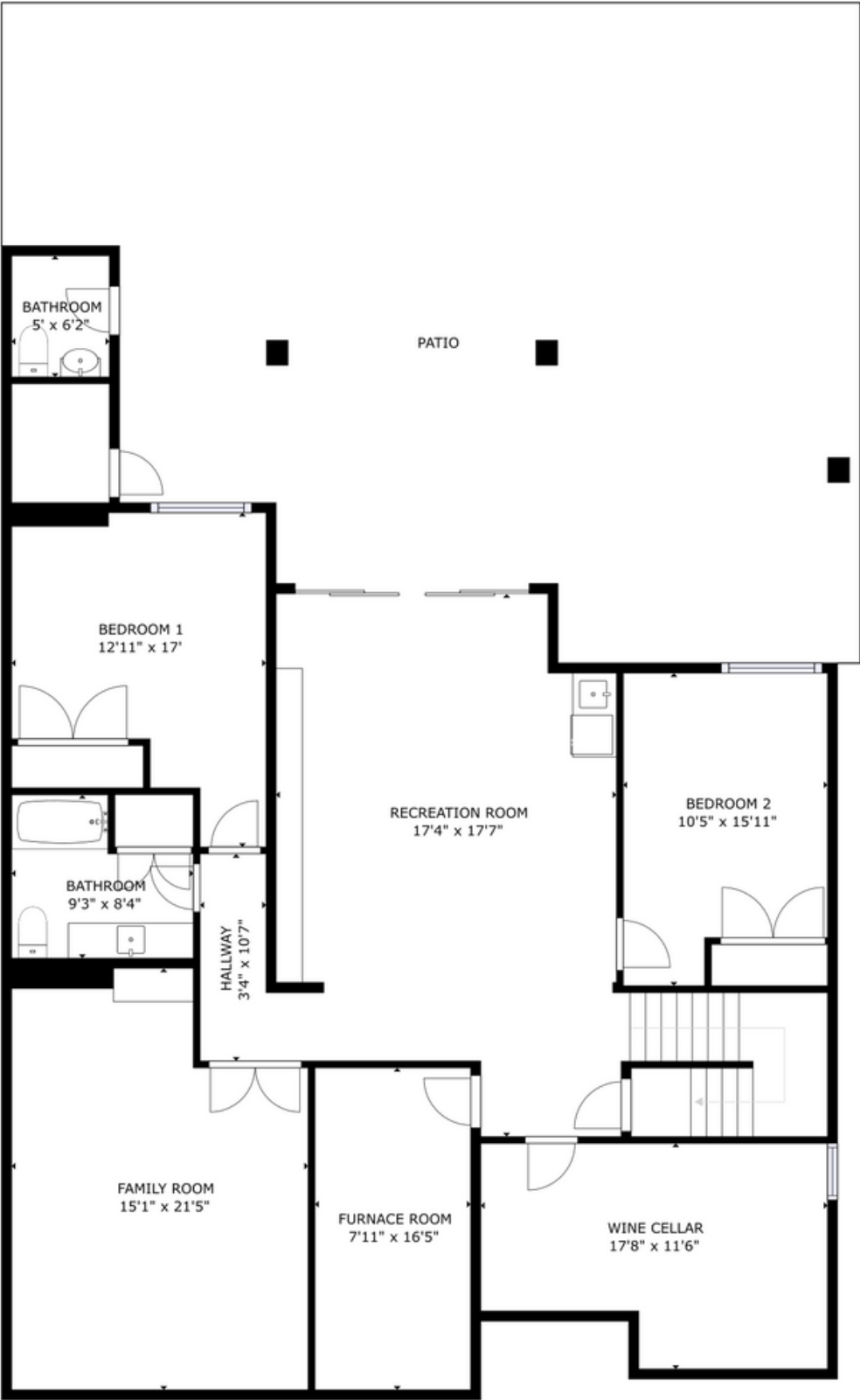
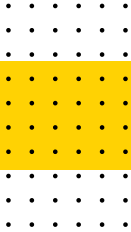
Enjoy early morning coffee on the deck before heading back into this primary bedroom space to get ready for the day – a true retreat. Featuring a 5-piece ensuite & walk-in closet. Soak in the deep, inviting bathtub or enjoy the separate tiled glass shower.

---



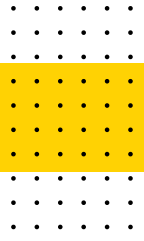
The downstairs space media & rec room, is the ultimate refuge for entertaining, designed with your every leisure and social need in mind. Embodying the essence of fun, this space is poolside & promises memorable gatherings and lively get-togethers.

# FLOOR PLANS & MEASUREMENTS



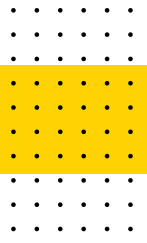
GROSS INTERNAL AREA  
FLOOR 1: 1693 sq ft, FLOOR 2: 1618 sq ft  
EXCLUDED AREAS: GARAGE: 853 sq ft, BALCONY: 561 sq ft, PATIO: 1101 sq ft  
TOTAL: 3311 sq ft  
SIZES AND DIMENSIONS ARE APPROXIMATE, ACTUAL MAY VARY.

# FLOOR PLANS & MEASUREMENTS



GROSS INTERNAL AREA  
 FLOOR 1: 1693 sq ft, FLOOR 2: 1618 sq ft  
 EXCLUDED AREAS: GARAGE: 853 sq ft, BALCONY: 561 sq ft, PATIO: 1101 sq ft  
 TOTAL: 3311 sq ft  
 SIZES AND DIMENSIONS ARE APPROXIMATE, ACTUAL MAY VARY.

# LOCATION, LOCATION, LOCATION!



## New to the area? Check out these local OKL faves:

- Okanagan Landing Community Association
- Paddlewheel Park & Boat Launch
- Kin Beach
- Ellison Provincial Park-Camping, Hiking, Biking, Swimming
- Hurlburt Park
- 1516 Pub & Restaurant
- Marshall Field-Soccer, Tennis, Pickle Ball, Playground
- Lakeshore Park & Beach
- Vernon Yacht Club
- North Okanagan Sailing Association
- Longacre Trail
- Okanagan Landing Plaza

## SCHOOL INFORMATION

School's Name	Grades Covered	School District	City	Special Notes/Programs	Walking Time	Distance	Driving Time	Transit Time
A Okanagan Landing	K - 7	SD 22	Vernon		8 mins	0.5 km	3 mins	8 mins
B Ellison	K - 7	SD 22	Vernon		57 mins	4.2 km	5 mins	16 mins
C Mission Hill	K - 7	SD 22	Vernon		1 hour 24 mins	5.9 km	9 mins	45 mins
D St James	K - 7	Independent	Vernon		1 hour 35 mins	6.8 km	12 mins	33 mins
E Alexis Park	K - 7	SD 22	Vernon		1 hour 47 mins	7.7 km	11 mins	40 mins
F Kidston	K - 7	SD 22	Coldstream		2 hours 35 mins	10.9 km	17 mins	1 hour 20 mins

School's Name	Grades Covered	School District	City	Special Notes/Programs	Walking Time	Distance	Driving Time	Transit Time
A Clarence Fulton	8 - 12	SD 22	Vernon		46 mins	3.4 km	5 mins	23 mins
B W L Seaton	8 - 12	SD 22	Vernon		1 hour 52 mins	8.0 km	13 mins	41 mins
C Vernon	8 - 12	SD 22	Vernon	AP Program	2 hours 0 mins	8.5 km	13 mins	1 hour 18 mins
D Kalamalka	8 - 12	SD 22	Vernon	AP Program	2 hours 42 mins	11.4 km	17 mins	1 hour 16 mins
E Vernon Christian	K - 12	Independent	Vernon		3 hours 0 mins	13.0 km	17 mins	1 hour 14 mins
F Charles Bloom	7 - 12	SD 22	Lumby		7 hours 22 mins	32.0 km	32 mins	1 hour 20 mins



# START YOUR NEXT CHAPTER HERE...



The layout of this home has a way of bringing people together, even while doing different things-cooking, reading, scrolling, sunning, catching up, yet still all together!

Come and explore 1000 Longacre Place, where every corner tells a unique story and countless happy memories await. Don't let this opportunity pass you by!

## Owning this home is only an offer away. Call now!



**Rod O'Keefe**  
Managing Broker  
PREC  
[rod@okeefe3.com](mailto:rod@okeefe3.com)

**Sue O'Keefe**  
Office Manager  
(Unlicensed)  
[sue@okeefe3.com](mailto:sue@okeefe3.com)

For more information:  
250-545-9039  
3609-32nd Street  
Vernon, BC V1T 5N5

**O'Keefe3%**  
Realty Inc.